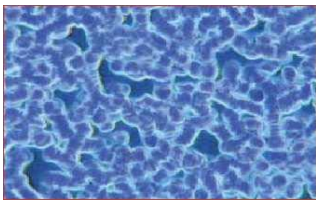


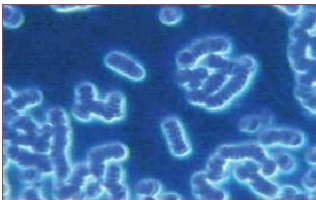
Please note: the following statements do NOT substitute a visit to your physician or naturopathic doctor!!

LIFE BLOOD CONDITION



Before drinking sole:

The blood test was done before taking the Himalayan crystal salt sole (brine). We notice how the blood cells stick together.



After drinking sole:

30 minutes after drinking the sole, the space between the cells is visibly larger. It is clearly shown how the blood cells start to separate from each other. The blood is able to flow smoother.

Life Blood Condition's Result:

We put the results in three categories:

Category A

People taking the sole every day had a good life-blood condition.

Category B

People who never had sole before, had a poor life-blood condition. After drinking the brine solution, it improved.

Category C

People who had sole before but stopped taking it, did not have as good a life-blood condition, even though they cooked with the crystal table salt daily.